

General

Flanders introduces an Economy HEPA filter (99.97% at 0.3µm) for various applications requiring HEPA efficiency at a low cost. The Alpha Cell E meets no UL or IEST requirements.

Product Design

AlphaCell E filters are manufactured with wet laid micro fiberglass media woven together with corrugated aluminum separators to create excellent aerodynamics and strength. The media element is adhered to the frame utilizing a thin layer of two component flame retardant polyurethane.

The frame is constructed of either 18 gauge galvanized steel or 3/4" particleboard.

The filter gasket is 1/4" black poly-butyl attached to the frame with adhesive. There is only one gasket joint to minimize penetration of particulate due to the gasket.

Applications

The product is designed to be used in the following crucial situations

Protection against:

- Particulate Contamination
- Bacteria and Viruses
- Other Dangerous and Hazardous Material

Protects while utilized in:

- Asbestos Removal
- Industrial HVAC Systems
- Precision Manufacturing

AlphaCell E Selection

All products have a rated overall efficiency of 99.97% at 0.3µm at the rated flow.

Specify the following material types:

G = Galvanized, P = Particleboard,

Gasket locations:

U = Upstream, D = Downstream

See below chart for Model Numbers Available:

MODEL NUMBER	FILTER ACTUAL SIZE	RATED FLOW
ACE-(P or G)-G(U or D)-GG	24" x 24" x 11-1/2"	2000 CFM
ACE-(P or G)-G(U or D)-GC	24" x 12" x 11-1/2"	1000 CFM
ACE-(P or G)-G(U or D)-CC	12" x 12" x 11-1/2"	500 CFM

Filters are only available in the three standard sizes listed above and in the nominal 12" depth.

Sample Model Number

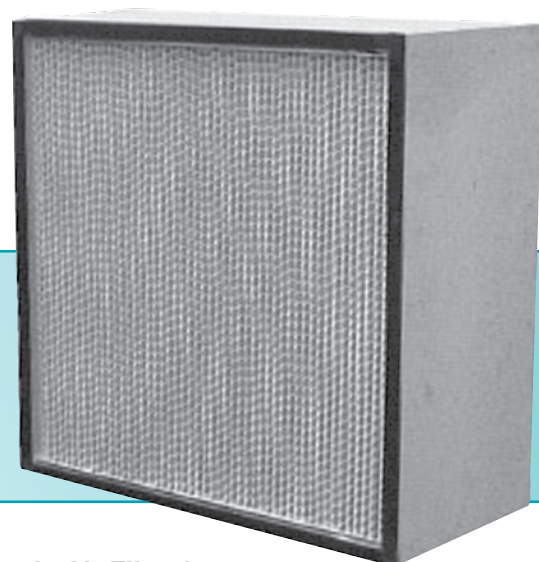
A **C** **E** - **G** - **G** **U** - **G** **G** **F**

Family name
and Class

Material

Gasket
Location

Filter Size



Economical HEPA Filter for various applications requiring HEPA efficiency at a low cost.

Frame Materials

Alpha Cell E Filters are available in particleboard and galvanized frame materials.

Gasket and Fluid Seal

The standard gasket seal is 0.75" x 0.25" neoprene for installation on either the upstream, downstream or both sides of the filter.

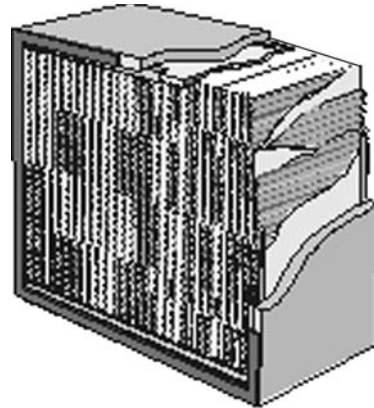
Holding Frames and Housings

Alpha frames are designed for Alpha Cell E filters in built-up filter banks. Each filter is secured in the frame with four bolt-type fasteners that either compress the gasket or press the knife-edge into the gel in the filter channel to maintain a leak-tight seal.

Surelock HEPA Filter Housings are recommended for side-access applications. The filters are sealed in place with either spring-loaded swing arm assemblies or a locking mechanism. The swing arm assemblies or locking mechanism either compress the gasket or press the knife-edge into the gel in the filter channel to maintain a leak-tight seal.

Alpha Cell E HEPA Filter Dimensions and Capacities						
CFM Dimensions and Capacities						
Frame Depth (Inches)	Filter Size and Frame Depth Designator	Actual Face Size (inches)	CFM Capacity at Clean Pressure Drop, inches w.g.			Weight (LB.)
			.65	1.0	1.35	
11-1/2	GG	24x24	715	1000	1430	35
	GC	24x12	330	500	649	23
	CC	12x12	149	225	292	12

Alpha Cell E with Separator Style Media Pack



Flanders/FFI®

Flanders Filters, Inc.
531 Flanders Filter Road
Washington, NC 27889

Phone: (252) 946-8081
Toll Free: (800) 637-2803
Fax: (252) 946-3425

Website: www.flanderscorp.com

REPRESENTED BY: